

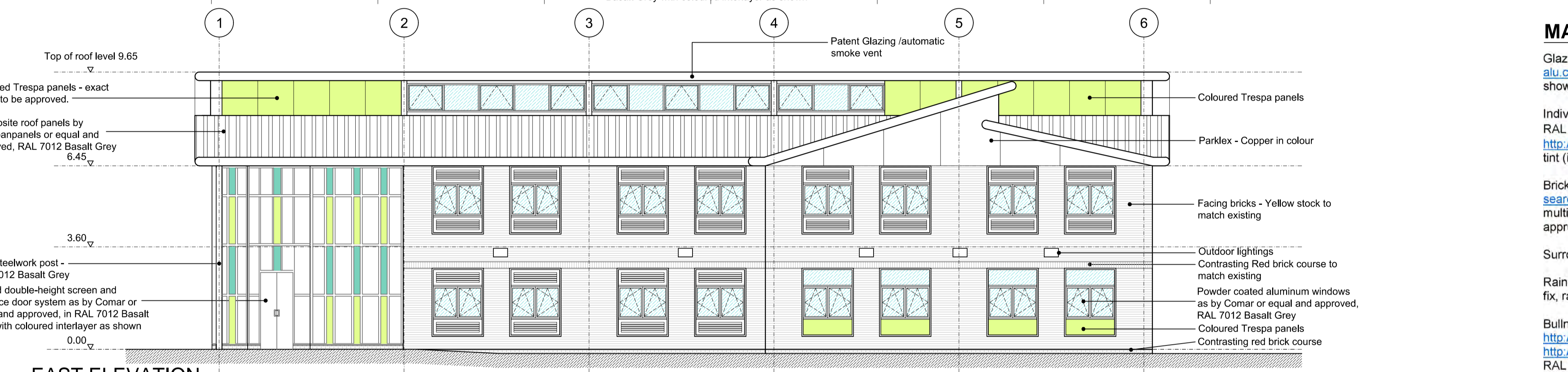
All dimensions to be verified on site by Main Contractor before the start of any shop drawings or work whatsoever either on their own behalf or that of sub-contractors.

Report any discrepancies to the Contract Administrator at once.

This drawing is to be read with all relevant Architect's and Engineer's drawings and other relevant information.

© Ingleton Wood LLP

LEGEND: DO NOT SCALE



**MATERIAL PALETTE:**

Glazed double-height reception area glazing and sliding door system; <http://www.comar-alu.co.uk/window-walling/> (or equal and approved), in RAL 7012 Basalt Grey with coloured interlayers as shown. (Note all curtain walling areas are to have internal blinds)

Individual aluminium windows / doors; <http://www.comar-alu.co.uk/windows> (or equal and approved), in RAL 7012 Basalt Grey, with matching vents as shown. Where shown also coloured Trespa infill panels <http://www.trespa.com/uk/product/trespa-meteor-facades> - exact colour to be approved, with solar body tint (in approved colour) to south and south west facing elevations.

Brickwork and mortar, where shown, to match existing from [http://wienerberger.co.uk/product-search?wb\\_condition=ProductType.1366306088345](http://wienerberger.co.uk/product-search?wb_condition=ProductType.1366306088345) to match existing as far as possible in Buff / Yellow multi-stock (main wall areas) and red multi-stock (for contrasting bands, plinths and details), or equal and approved.

Surround to windows; Ply-backed PPC aluminium sheeting in RAL 7012 Basalt Grey.

Rainscreen Cladding; <http://www.parklex.com/products/facade/> in Copper, cut to size and fitted in secret fix, random pattern, as shown. Add link to fireproofing quantities.

Bullnosed Facias / soffits / downpipes and cappings or flashings in PPC Coated aluminium; <http://www.dales-eaves.co.uk/fascia.html>, or equal and approved, with downpipe profile; [http://www.alumascrainwater.co.uk/aluminium-downpipes/flushjoint/3/c3\\_2](http://www.alumascrainwater.co.uk/aluminium-downpipes/flushjoint/3/c3_2), or equal and approved, all in RAL 7012 Basalt Grey.

High performance profiled composite roofing system; <http://www.kingspanpanels.co.uk/panels/products/insulated-roof-panels/trapezoidal-rw/> (or equal and approved), in standard colour range to match as far as possible RAL 7012 Basalt Grey.

Add a note also to say;

Refer to 3D/Artists impression.

Refer to M and E drawings and spec for details of external lighting.

Sports fencing to new tennis courts; <https://www.jacksons-security.co.uk/sports-fencing/rebound.aspx>, or equal and approved in Grass Green RAL 6010.

Revision	Date	Description	Drawn	Checked
E	07.07.17	Additional information added for planning stage issue	DU	IB
D	15.12.16	Revised to suit planner's pre-app comments	DU	IB
C	05.10.16	Revised to suit our latest plans	DU	IB
B	23.09.16	Revised to suit Client's requirements	DU	IB
A	16.09.16	Revised to suit Client's requirements	DU	IB

**Ingleton Wood**  
 Vision, form and function

Billerica  
 Cambridge  
 Colchester  
 London  
 Norwich

10 Lake Meadows Business Park  
 Woodbrook Crescent  
 Billericay CM12 0EQ  
 T: 01277 437800  
 www.ingletonwood.co.uk

Project: **St Thomas More High School  
 Kenilworth Gardens  
 Westcliff-on-Sea  
 Essex SS0 0BW**

Drawing Title: **Proposed Elevations  
 Proposed Expansion Project to 6FE**

Client: **St Thomas More High School**

Drawn	Checked	Date	Scale	Paper Size
DU	IB	09.09.16	1:100	A1
Job No.	Dwg No.	Stage	Revision	
62519	103	Planning	E	

